

Greater South East Irrigation Scheme (GSEIS)

The GSEIS has a total forecast cost of \$301 million and will supply highly reliable water to existing and new irrigators across one of Tasmania's driest regions, supporting agricultural activity on up to 47,688 hectares of farmland.

The GSEIS will integrate the existing South East Stages One, Two and Three schemes, enhancing and securing irrigation water supply across the Jordan River Valley, Brighton, Cambridge, Richmond, Tea Tree, Colebrook, Campania, Sorell, Forcett and Pawleena. Water will be sourced from Lake Meadowbank via a pump station, delivering water at a reliability of greater than 95 per cent per annum. The region's primary production is centred on viticulture, cropping and horticulture, supported by a predominantly dry-summer climate that provides favourable growing conditions. Key outputs include cherries, apples, salad vegetables, wine grapes, stone fruit, lucerne, walnuts and olives.

Water Supply and Distribution

The scheme has a capacity of 37,200 ML annually (18,600 ML in summer and 18,600 ML in winter).

Infrastructure and Operations

The GSEIS will be a major irrigation scheme for Tasmania's south east, including 160 km of pipeline and two pump stations. The scheme will integrate and augment the three existing south east schemes, with a rising mainline constructed over the Pelham Tier to a buffer dam, a long falling mainline connecting to Tea Tree and existing Stages Two and Three, and extensions into the Coal River Valley and Jordan River Valley. It will bring more than 30,000 ML of new water into the area - more than quadrupling the combined capacity of the existing schemes. That will enable diversification of farming activity and increase drought security and climate change resilience.



Economic Impact

The GSEIS will create approximately 225 direct jobs during the construction phase and up to 468 jobs (direct and indirect) post-completion in the region.

The scheme will deliver an increase in total salaries and wages of up to \$33 million per annum following full utilisation, and on-farm investment is estimated at approximately \$120 million, rising to \$184 million when including the cost of water entitlements.

Subject to State and Federal approval processes, the GSEIS is targeted to be operational by mid-2030. The GSEIS is funded by the Australian Government (\$150 million), the Tasmanian Government (\$75 million), and Tasmanian irrigators through purchase of water entitlements (\$75 million).

Greater South East Irrigation Scheme (GSEIS)

Fast facts	
Capital cost	\$301 million
Potentially irrigable area	47,688 hectares
Scheme capacity	37,200 ML annually (18,600 ML summer + 18,600 ML winter)
Water source	Lake Meadowbank
Water reliability	Greater than 95%
SE summer water entitlement price	\$3,500 / ML
SE winter water entitlement price	\$1,850 / ML
Jordan River Valley summer price	\$2,500 / ML
Jordan River Valley winter price	\$1,750 / ML
Length of pipeline	160 km
Pump stations	1 main pump station and 1 minor pump station
Nature of development	Public / private partnership

Key dates	
Business case submitted	October 2023
Expressions of Interest launched	February 2020
Funding approved	November 2024
Planned EPBC approval	January 2028
Scheme commissioning	Mid-2030

Get in Touch:

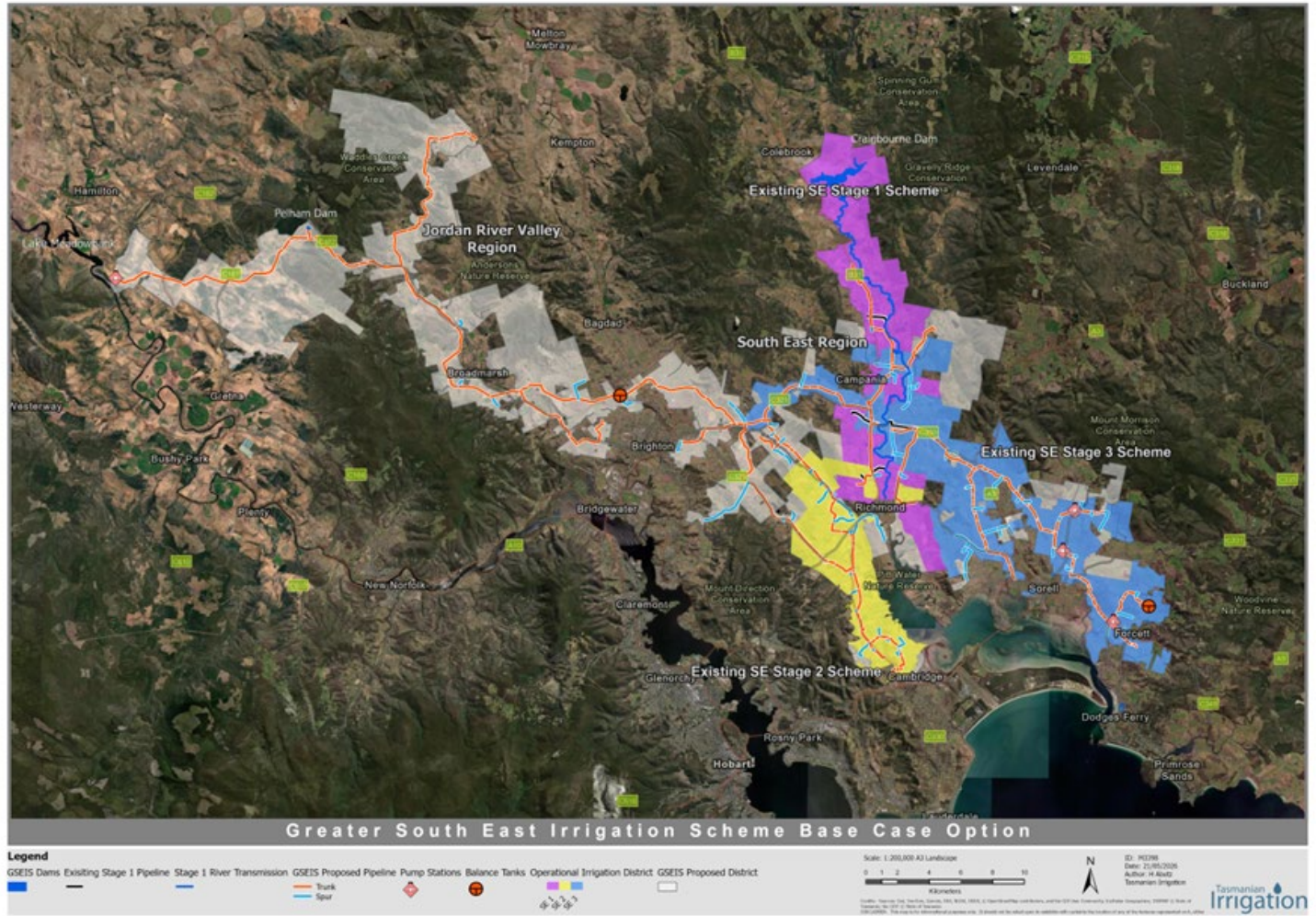
Phone: (03) 6398-8433

Email: enquiries@tasirrigation.com.au

www.tasmanianirrigation.com.au

Greater South East Irrigation Scheme (GSEIS)

Scheme map



Get in Touch:

Phone: (03) 6398-8433

Email: enquiries@tasirrigation.com.au

www.tasmanianirrigation.com.au

