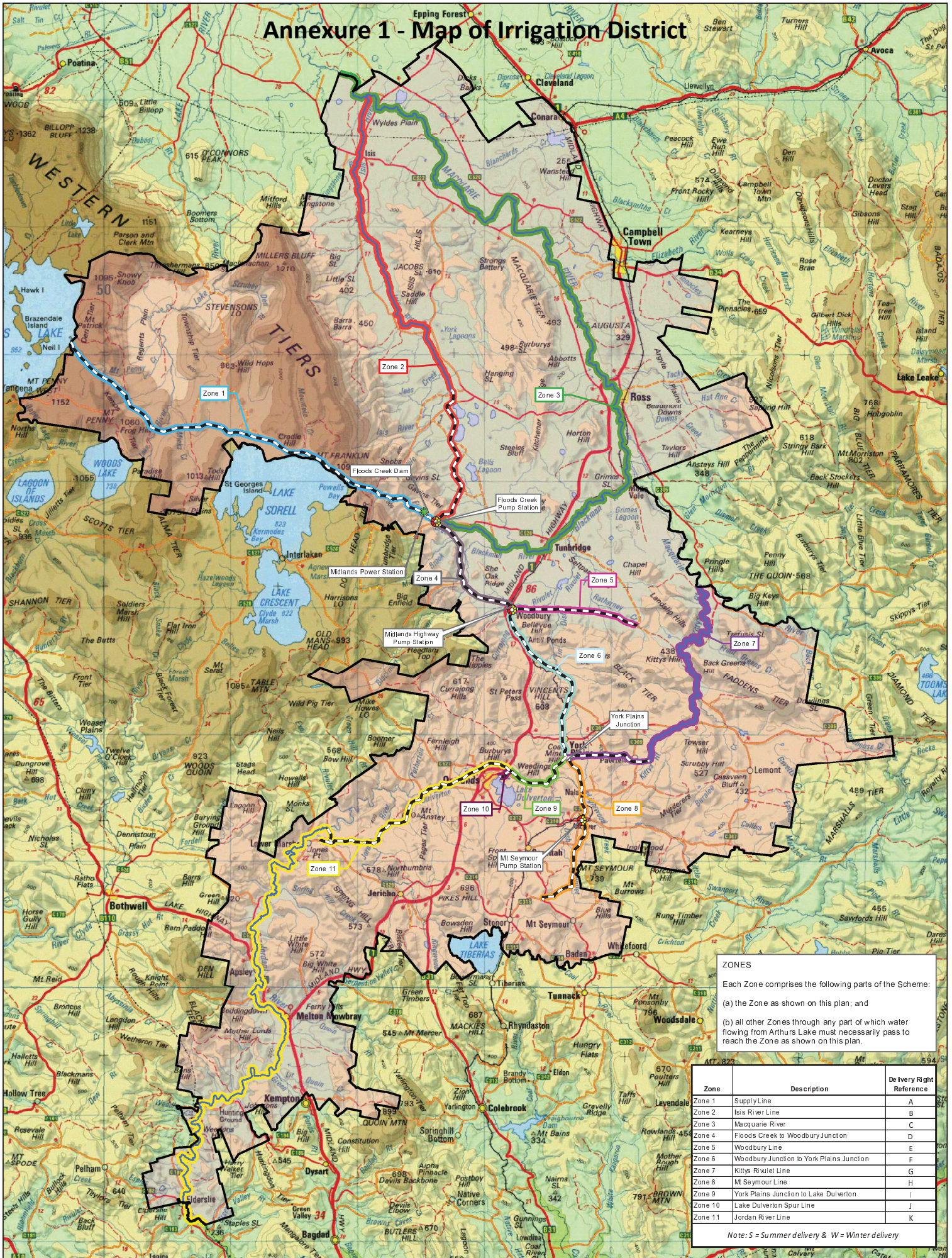


Annexure 1 - Map of Irrigation District



ZONES

Each Zone comprises the following parts of the Scheme:

(a) the Zone as shown on this plan; and

(b) all other Zones through any part of which water flowing from Arthur's Lake must necessarily pass to reach the Zone as shown on this plan.

Zone	Description	Delivery Right Reference
Zone 1	Supply Line	A
Zone 2	Isis River Line	B
Zone 3	Maquarie River	C
Zone 4	Floods Creek to Woodbury Junction	D
Zone 5	Woodbury Line	E
Zone 6	Woodbury Junction to York Plains Junction	F
Zone 7	Kittys Rivulet Line	G
Zone 8	Mt Seymour Line	H
Zone 9	York Plains Junction to Lake Duverton	I
Zone 10	Lake Duverton Spur Line	J
Zone 11	Jordan River Line	K

Note: S = Summer delivery & W = Winter delivery

Midlands Water Scheme - Zones

Legend

- Pump stations
- Midlands Power Station
- Pipeline alignment
- MWS participating rivers
- Zone 1
- Zone 2
- Zone 3
- Zone 4
- Zone 5
- Zone 6
- Zone 7
- Zone 8
- Zone 9
- Zone 10
- Zone 11
- MWS Irrigation District

Map Scale 1:265,000
When printed at A3

0 1 2 3 4
Kilometres

Base image by TASMAR, © State of Tasmania
Base data from theLST, © State of Tasmania

Map Updated by FB
Tasmanian Irrigation Pty Ltd
Date: 10/07/2014

Tasmanian Irrigation

Map No: MWS-M0100-003
Version: 003