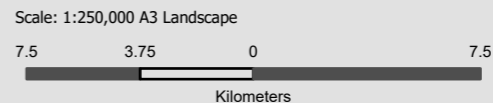


55G 475459 5330175 **NMIS Project Area and Construction Corridor** 55G 577959 5330175

Legend

- NMIS Irrigation District
- Construction Project Area (Survey Area)

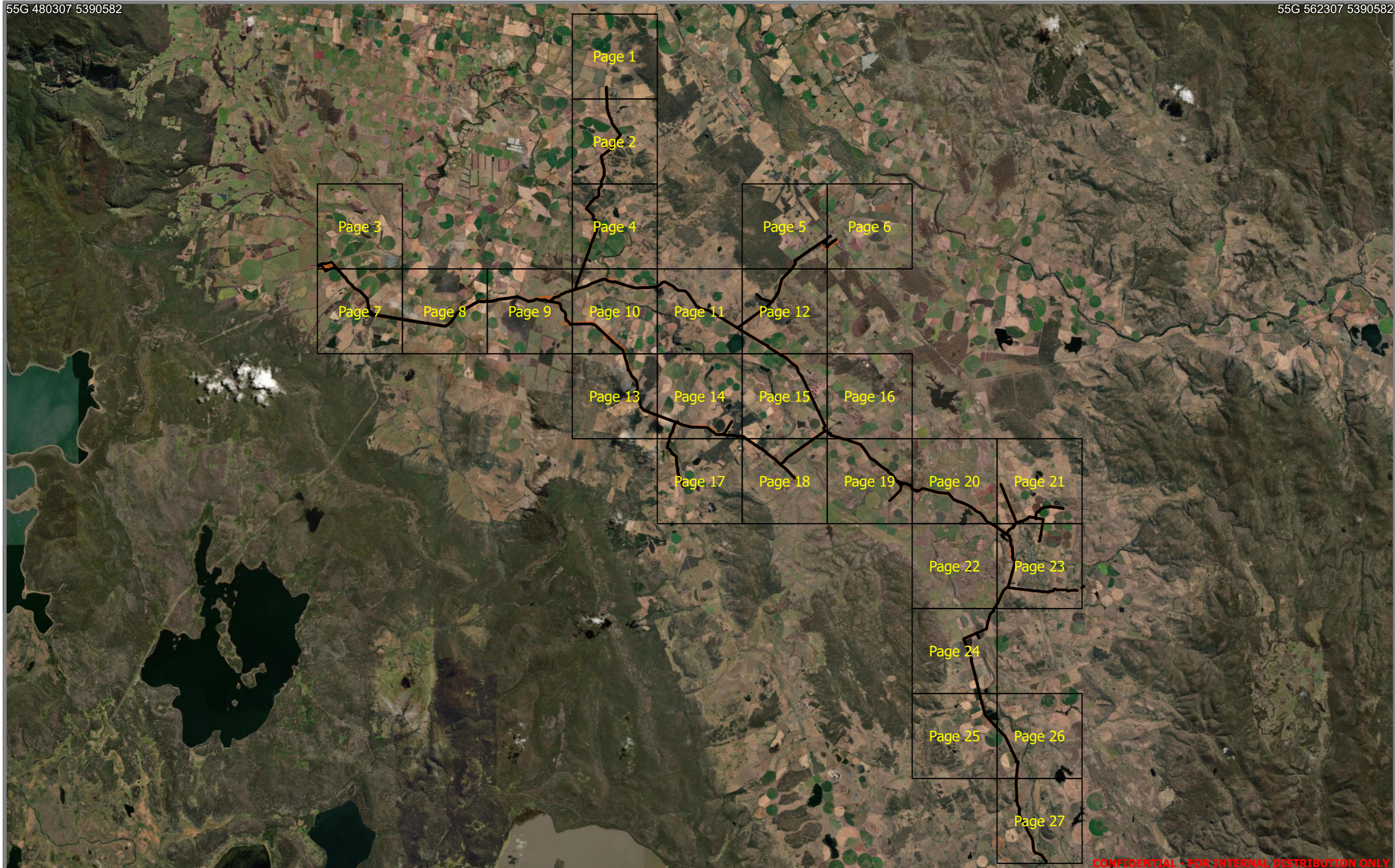


ID: M3358 (EPBC 2022/09295)
 Date: 9/04/2025
 Spatial Reference: GDA 1994 MGA Zone 55
 Author: R Webb
 Tasmanian Irrigation



Credits: Earthstar Geographics; TASMIP © State of Tasmania; the LIST © State of Tasmania
 DISCLAIMER: This map is for informational purposes only. It should not be relied upon to establish with certainty the location of any of the features represented on it, either absolutely or in relation to other features. This map is not suitable for site specific decision making.

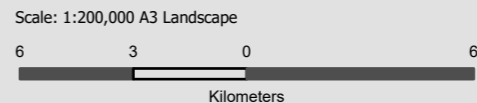
CONFIDENTIAL - FOR INTERNAL DISTRIBUTION ONLY



NMIS Project Area and Construction Corridor

CONFIDENTIAL - FOR INTERNAL DISTRIBUTION ONLY

- Legend**
- Construction Project Area (Survey Area)
 - Construction Corridor (Impact Area)



ID: M3358 (EPBC 2022/09295)
 Date: 9/04/2025
 Spatial Reference: GDA 1994 MGA Zone 55
 Author: R Webb
 Tasmanian Irrigation

Credits: Earthstar Geographics; TASMAR © State of Tasmania; the LIST © State of Tasmania
 DISCLAIMER: This map is for informational purposes only. It should not be relied upon to establish with certainty the location of any of the features represented on it, either absolutely or in relation to other features. This map is not suitable for site specific decision making.





55G 512207 5389952

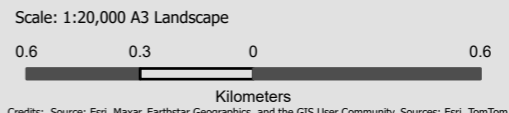
55G 520407 5389952

55G 512207 5384812

55G 520407 5384812

NMIS Project Area and Construction Corridor

- Legend**
- Construction Corridor (Impact Area)
 - Construction Project Area (Survey Area)



ID: M3358 (EPBC 2022/09295) Page: 1
 Date: 9/04/2025
 Spatial Reference: GDA 1994 MGA Zone 55
 Author: R Webb
 Tasmanian Irrigation

Credits: Source: Esri, Maxar, Earthstar Geographics, and the GIS User Community. Sources: Esri, TomTom, Garmin, FAO, NOAA, USGS, © OpenStreetMap contributors, and the GIS User Community, TASMAR © State of Tasmania, the LIST © State of Tasmania
 DISCLAIMER: This map is for informational purposes only. It should not be relied upon to establish with certainty the location of any of the features represented on it, either absolutely or in relation to other features. This map is not suitable for site specific decision making.



CONFIDENTIAL - FOR INTERNAL DISTRIBUTION ONLY



55G 512207 5384952

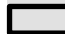

55G 520407 5384952

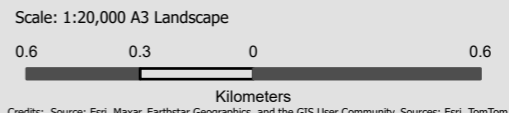
55G 512207 5379812

55G 520407 5379812

NMIS Project Area and Construction Corridor

CONFIDENTIAL - FOR INTERNAL DISTRIBUTION ONLY

- Legend**
-  Construction Corridor (Impact Area)
 -  Construction Project Area (Survey Area)



ID: M3358 (EPBC 2022/09295) Page: 2
 Date: 9/04/2025
 Spatial Reference: GDA 1994 MGA Zone 55
 Author: R Webb
 Tasmanian Irrigation

Credits: Source: Esri, Maxar, Earthstar Geographics, and the GIS User Community. Sources: Esri, TomTom, Garmin, FAO, NOAA, USGS, © OpenStreetMap contributors, and the GIS User Community. TASMAP © State of Tasmania, the LIST © State of Tasmania
 DISCLAIMER: This map is for informational purposes only. It should not be relied upon to establish with certainty the location of any of the features represented on it, either absolutely or in relation to other features. This map is not suitable for site specific decision making.





55G 497207 5379952

55G 505407 5379952

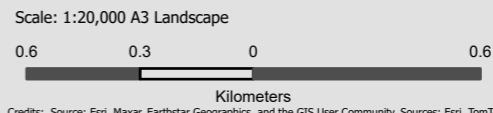
55G 497207 5374812

55G 505407 5374812

NMIS Project Area and Construction Corridor

CONFIDENTIAL - FOR INTERNAL DISTRIBUTION ONLY

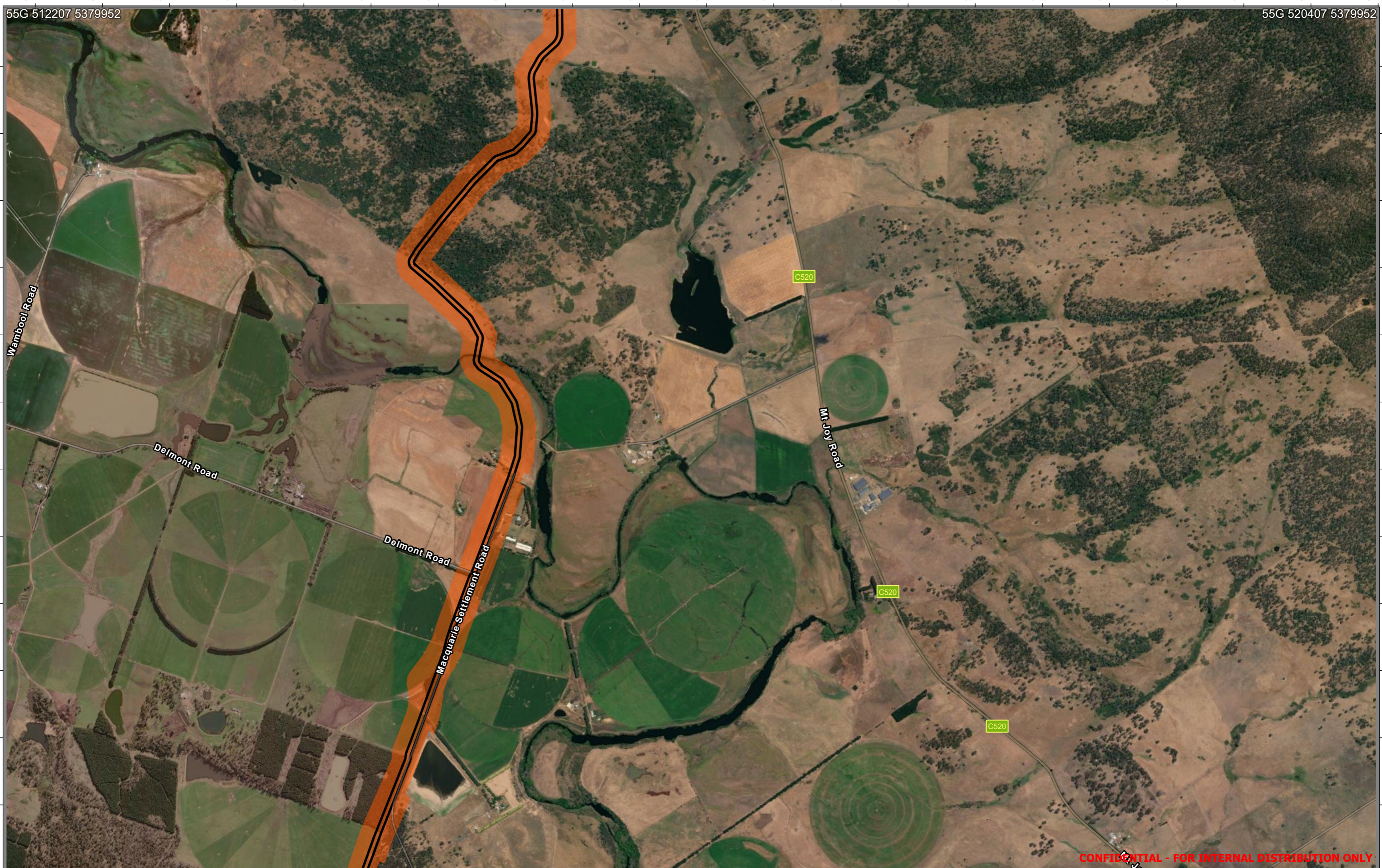
- Legend**
- Construction Corridor (Impact Area)
 - Construction Project Area (Survey Area)



ID: M3358 (EPBC 2022/09295) Page: 3
 Date: 9/04/2025
 Spatial Reference: GDA 1994 MGA Zone 55
 Author: R Webb
 Tasmanian Irrigation

Credits: Source: Esri, Maxar, Earthstar Geographics, and the GIS User Community. Sources: Esri, TomTom, Garmin, FAO, NOAA, USGS, © OpenStreetMap contributors, and the GIS User Community, TASMAP © State of Tasmania, the LIST © State of Tasmania
 DISCLAIMER: This map is for informational purposes only. It should not be relied upon to establish with certainty the location of any of the features represented on it, either absolutely or in relation to other features. This map is not suitable for site specific decision making.





55G 512207 5379952

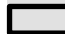

55G 520407 5379952

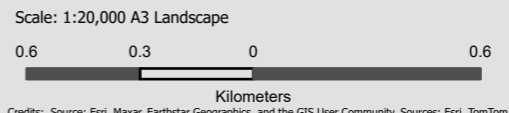
55G 512207 5374812

55G 520407 5374812

NMIS Project Area and Construction Corridor

CONFIDENTIAL - FOR INTERNAL DISTRIBUTION ONLY

- Legend**
-  Construction Corridor (Impact Area)
 -  Construction Project Area (Survey Area)



ID: M3358 (EPBC 2022/09295) Page: 4
 Date: 9/04/2025
 Spatial Reference: GDA 1994 MGA Zone 55
 Author: R Webb
 Tasmanian Irrigation

Credits: Source: Esri, Maxar, Earthstar Geographics, and the GIS User Community. Sources: Esri, TomTom, Garmin, FAO, NOAA, USGS, © OpenStreetMap contributors, and the GIS User Community. TASMAP © State of Tasmania, the LIST © State of Tasmania
 DISCLAIMER: This map is for informational purposes only. It should not be relied upon to establish with certainty the location of any of the features represented on it, either absolutely or in relation to other features. This map is not suitable for site specific decision making.





55G 522207 5379952

55G 530407 5379952

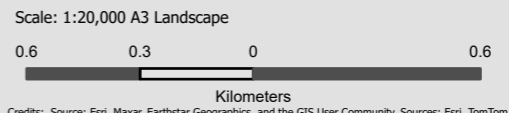
55G 522207 5374812

55G 530407 5374812

NMIS Project Area and Construction Corridor

CONFIDENTIAL - FOR INTERNAL DISTRIBUTION ONLY

- Legend**
- Construction Corridor (Impact Area)
 - Construction Project Area (Survey Area)



ID: M3358 (EPBC 2022/09295) Page: 5
 Date: 9/04/2025
 Spatial Reference: GDA 1994 MGA Zone 55
 Author: R Webb
 Tasmanian Irrigation

Credits: Source: Esri, Maxar, Earthstar Geographics, and the GIS User Community. Sources: Esri, TomTom, Garmin, FAO, NOAA, USGS, © OpenStreetMap contributors, and the GIS User Community. TASMAP © State of Tasmania; the LIST © State of Tasmania
 DISCLAIMER: This map is for informational purposes only. It should not be relied upon to establish with certainty the location of any of the features represented on it, either absolutely or in relation to other features. This map is not suitable for site specific decision making.



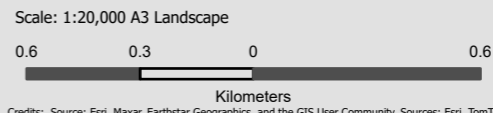


55G 527207 5379952 55G 535407 5379952

55G 527207 5374812 55G 535407 5374812

NMIS Project Area and Construction Corridor

- Legend**
- Construction Corridor (Impact Area)
 - Construction Project Area (Survey Area)



ID: M3358 (EPBC 2022/09295) Page: 6
 Date: 9/04/2025
 Spatial Reference: GDA 1994 MGA Zone 55
 Author: R Webb
 Tasmanian Irrigation

Credits: Source: Esri, Maxar, Earthstar Geographics, and the GIS User Community. Sources: Esri, TomTom, Garmin, FAO, NOAA, USGS, © OpenStreetMap contributors, and the GIS User Community. TASMAP © State of Tasmania, the LIST © State of Tasmania
 DISCLAIMER: This map is for informational purposes only. It should not be relied upon to establish with certainty the location of any of the features represented on it, either absolutely or in relation to other features. This map is not suitable for site specific decision making.

CONFIDENTIAL - FOR INTERNAL DISTRIBUTION ONLY



55G 497207 5374952

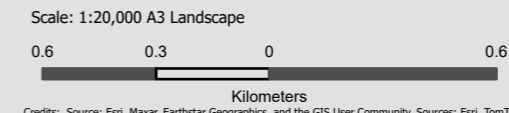
55G 505407 5374952

55G 497207 5369812

55G 505407 5369812

NMIS Project Area and Construction Corridor

- Legend**
- Construction Corridor (Impact Area)
 - Construction Project Area (Survey Area)



ID: M3358 (EPBC 2022/09295) Page: 7
 Date: 9/04/2025
 Spatial Reference: GDA 1994 MGA Zone 55
 Author: R Webb
 Tasmanian Irrigation

Credits: Source: Esri, Maxar, Earthstar Geographics, and the GIS User Community. Sources: Esri, TomTom, Garmin, FAO, NOAA, USGS, © OpenStreetMap contributors, and the GIS User Community. TASMAP © State of Tasmania, the LIST © State of Tasmania
 DISCLAIMER: This map is for informational purposes only. It should not be relied upon to establish with certainty the location of any of the features represented on it, either absolutely or in relation to other features. This map is not suitable for site specific decision making.



CONFIDENTIAL - FOR INTERNAL DISTRIBUTION ONLY

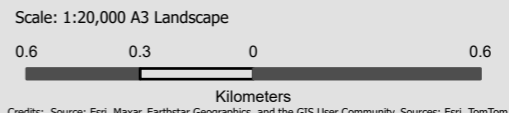


55G 502207 5374952
5374800
5374400
5374000
5373600
5373200
5372800
5372400
5372000
5371600
5371200
5370800
5370400
5370000
55G 502207 5369812

55G 510407 5374952
5374800
5374400
5374000
5373600
5373200
5372800
5372400
5372000
5371600
5371200
5370800
5370400
5370000
55G 510407 5369812

NMIS Project Area and Construction Corridor

- Legend**
- Construction Corridor (Impact Area)
 - Construction Project Area (Survey Area)



ID: M3358 (EPBC 2022/09295) Page: 8
Date: 9/04/2025
Spatial Reference: GDA 1994 MGA Zone 55
Author: R Webb
Tasmanian Irrigation

Credits: Source: Esri, Maxar, Earthstar Geographics, and the GIS User Community. Sources: Esri, TomTom, Garmin, FAO, NOAA, USGS, © OpenStreetMap contributors, and the GIS User Community, TASMAP © State of Tasmania, the LIST © State of Tasmania
DISCLAIMER: This map is for informational purposes only. It should not be relied upon to establish with certainty the location of any of the features represented on it, either absolutely or in relation to other features. This map is not suitable for site specific decision making.



CONFIDENTIAL - FOR INTERNAL DISTRIBUTION ONLY



507600 508000 508400 508800 509200 509600 510000 510400 510800 511200 511600 512000 512400 512800 513200 513600 514000 514400 514800 515200

537480
537440
537400
537360
537320
537280
537240
537200
537160
537120
537080
537040
537000

55G 507207 5374952

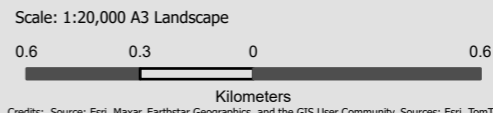
55G 515407 5374952

55G 507207 5369812

55G 515407 5369812

NMIS Project Area and Construction Corridor

- Legend**
- Construction Corridor (Impact Area)
 - Construction Project Area (Survey Area)



ID: M3358 (EPBC 2022/09295) Page: 9
 Date: 9/04/2025
 Spatial Reference: GDA 1994 MGA Zone 55
 Author: R Webb
 Tasmanian Irrigation

Credits: Source: Esri, Maxar, Earthstar Geographics, and the GIS User Community. Sources: Esri, TomTom, Garmin, FAO, NOAA, USGS, © OpenStreetMap contributors, and the GIS User Community, TASMAR © State of Tasmania, the LIST © State of Tasmania
 DISCLAIMER: This map is for informational purposes only. It should not be relied upon to establish with certainty the location of any of the features represented on it, either absolutely or in relation to other features. This map is not suitable for site specific decision making.



CONFIDENTIAL - FOR INTERNAL DISTRIBUTION ONLY



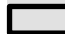

55G 512207 5374952

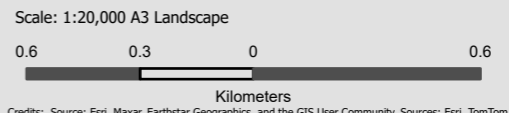
55G 520407 5374952

55G 512207 5369812

55G 520407 5369812

NMIS Project Area and Construction Corridor

- Legend**
-  Construction Corridor (Impact Area)
 -  Construction Project Area (Survey Area)



ID: M3358 (EPBC 2022/09295) Page: 10
 Date: 9/04/2025
 Spatial Reference: GDA 1994 MGA Zone 55
 Author: R Webb
 Tasmanian Irrigation

Credits: Source: Esri, Maxar, Earthstar Geographics, and the GIS User Community. Sources: Esri, TomTom, Garmin, FAO, NOAA, USGS, © OpenStreetMap contributors, and the GIS User Community. TASMAP © State of Tasmania, the LIST © State of Tasmania
 DISCLAIMER: This map is for informational purposes only. It should not be relied upon to establish with certainty the location of any of the features represented on it, either absolutely or in relation to other features. This map is not suitable for site specific decision making.



CONFIDENTIAL - FOR INTERNAL DISTRIBUTION ONLY



55G 517207 5374952

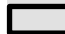

55G 525407 5374952

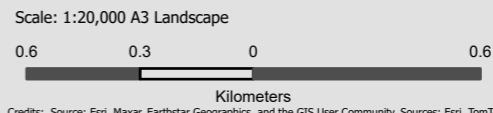
55G 517207 5369812

55G 525407 5369812

NMIS Project Area and Construction Corridor

CONFIDENTIAL - FOR INTERNAL DISTRIBUTION ONLY

- Legend**
-  Construction Corridor (Impact Area)
 -  Construction Project Area (Survey Area)



ID: M3358 (EPBC 2022/09295) Page: 11
 Date: 9/04/2025
 Spatial Reference: GDA 1994 MGA Zone 55
 Author: R Webb
 Tasmanian Irrigation

Credits: Source: Esri, Maxar, Earthstar Geographics, and the GIS User Community. Sources: Esri, TomTom, Garmin, FAO, NOAA, USGS, © OpenStreetMap contributors, and the GIS User Community. TASMAP © State of Tasmania, the LIST © State of Tasmania
 DISCLAIMER: This map is for informational purposes only. It should not be relied upon to establish with certainty the location of any of the features represented on it, either absolutely or in relation to other features. This map is not suitable for site specific decision making.





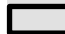

55G 522207 5374952

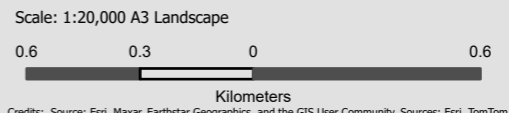
55G 530407 5374952

55G 522207 5369812

55G 530407 5369812

NMIS Project Area and Construction Corridor

- Legend**
-  Construction Corridor (Impact Area)
 -  Construction Project Area (Survey Area)



ID: M3358 (EPBC 2022/09295) Page: 12
 Date: 9/04/2025
 Spatial Reference: GDA 1994 MGA Zone 55
 Author: R Webb
 Tasmanian Irrigation

Credits: Source: Esri, Maxar, Earthstar Geographics, and the GIS User Community. Sources: Esri, TomTom, Garmin, FAO, NOAA, USGS, © OpenStreetMap contributors, and the GIS User Community, TASMAP © State of Tasmania, the LIST © State of Tasmania
 DISCLAIMER: This map is for informational purposes only. It should not be relied upon to establish with certainty the location of any of the features represented on it, either absolutely or in relation to other features. This map is not suitable for site specific decision making.



CONFIDENTIAL - FOR INTERNAL DISTRIBUTION ONLY

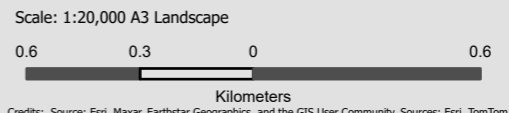


55G 512207 5369952 55G 520407 5369952

55G 512207 5364812 55G 520407 5364812

NMIS Project Area and Construction Corridor

- Legend**
- Construction Corridor (Impact Area)
 - Construction Project Area (Survey Area)



ID: M3358 (EPBC 2022/09295) Page: 13
 Date: 9/04/2025
 Spatial Reference: GDA 1994 MGA Zone 55
 Author: R Webb
 Tasmanian Irrigation

Credits: Source: Esri, Maxar, Earthstar Geographics, and the GIS User Community, Sources: Esri, TomTom, Garmin, FAO, NOAA, USGS, © OpenStreetMap contributors, and the GIS User Community, TASMAP © State of Tasmania, the LIST © State of Tasmania
 DISCLAIMER: This map is for informational purposes only. It should not be relied upon to establish with certainty the location of any of the features represented on it, either absolutely or in relation to other features. This map is not suitable for site specific decision making.



CONFIDENTIAL - FOR INTERNAL DISTRIBUTION ONLY



55G 517207 5369952

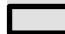

55G 525407 5369952

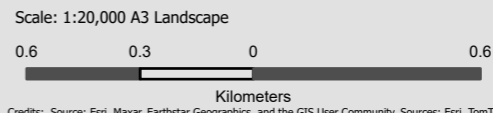
55G 517207 5364812

55G 525407 5364812

NMIS Project Area and Construction Corridor

CONFIDENTIAL - FOR INTERNAL DISTRIBUTION ONLY

- Legend**
-  Construction Corridor (Impact Area)
 -  Construction Project Area (Survey Area)



ID: M3358 (EPBC 2022/09295) Page: 14
 Date: 9/04/2025
 Spatial Reference: GDA 1994 MGA Zone 55
 Author: R Webb
 Tasmanian Irrigation

Tasmanian Irrigation

Credits: Source: Esri, Maxar, Earthstar Geographics, and the GIS User Community. Sources: Esri, TomTom, Garmin, FAO, NOAA, USGS, © OpenStreetMap contributors, and the GIS User Community, TASMAP © State of Tasmania, the LIST © State of Tasmania
 DISCLAIMER: This map is for informational purposes only. It should not be relied upon to establish with certainty the location of any of the features represented on it, either absolutely or in relation to other features. This map is not suitable for site specific decision making.



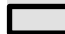

55G 522207 5369952

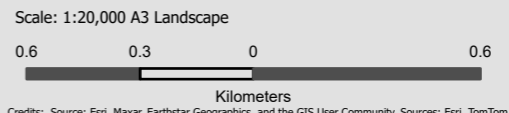
55G 530407 5369952

55G 522207 5364812

55G 530407 5364812

NMIS Project Area and Construction Corridor

- Legend**
-  Construction Corridor (Impact Area)
 -  Construction Project Area (Survey Area)



ID: M3358 (EPBC 2022/09295) Page: 15
 Date: 9/04/2025
 Spatial Reference: GDA 1994 MGA Zone 55
 Author: R Webb
 Tasmanian Irrigation

Credits: Source: Esri, Maxar, Earthstar Geographics, and the GIS User Community. Sources: Esri, TomTom, Garmin, FAO, NOAA, USGS, © OpenStreetMap contributors, and the GIS User Community. TASMAP © State of Tasmania, the LIST © State of Tasmania
 DISCLAIMER: This map is for informational purposes only. It should not be relied upon to establish with certainty the location of any of the features represented on it, either absolutely or in relation to other features. This map is not suitable for site specific decision making.





55G 527207 5369952

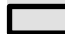

55G 535407 5369952

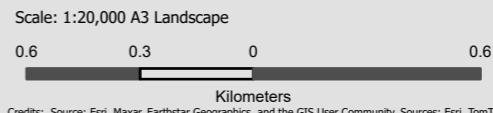
55G 527207 5364812

55G 535407 5364812

NMIS Project Area and Construction Corridor

CONFIDENTIAL - FOR INTERNAL DISTRIBUTION ONLY

- Legend**
-  Construction Corridor (Impact Area)
 -  Construction Project Area (Survey Area)



ID: M3358 (EPBC 2022/09295) Page: 16
 Date: 9/04/2025
 Spatial Reference: GDA 1994 MGA Zone 55
 Author: R Webb
 Tasmanian Irrigation

Credits: Source: Esri, Maxar, Earthstar Geographics, and the GIS User Community. Sources: Esri, TomTom, Garmin, FAO, NOAA, USGS, © OpenStreetMap contributors, and the GIS User Community, TASMAP © State of Tasmania, the LIST © State of Tasmania
 DISCLAIMER: This map is for informational purposes only. It should not be relied upon to establish with certainty the location of any of the features represented on it, either absolutely or in relation to other features. This map is not suitable for site specific decision making.





55G 517207 5364952

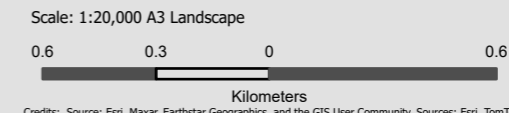
55G 525407 5364952

55G 517207 5359812

55G 525407 5359812

NMIS Project Area and Construction Corridor

- Legend**
- Construction Corridor (Impact Area)
 - Construction Project Area (Survey Area)



ID: M3358 (EPBC 2022/09295) Page: 17
 Date: 9/04/2025
 Spatial Reference: GDA 1994 MGA Zone 55
 Author: R Webb
 Tasmanian Irrigation

Credits: Source: Esri, Maxar, Earthstar Geographics, and the GIS User Community. Sources: Esri, TomTom, Garmin, FAO, NOAA, USGS, © OpenStreetMap contributors, and the GIS User Community, TASMAR © State of Tasmania, the LIST © State of Tasmania
 DISCLAIMER: This map is for informational purposes only. It should not be relied upon to establish with certainty the location of any of the features represented on it, either absolutely or in relation to other features. This map is not suitable for site specific decision making.



CONFIDENTIAL - FOR INTERNAL DISTRIBUTION ONLY



55G 522207 5364952

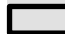

55G 530407 5364952

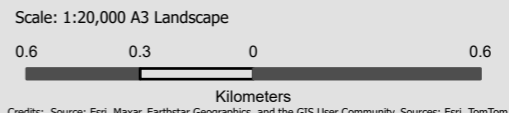
55G 522207 5359812

55G 530407 5359812

NMIS Project Area and Construction Corridor

CONFIDENTIAL - FOR INTERNAL DISTRIBUTION ONLY

- Legend**
-  Construction Corridor (Impact Area)
 -  Construction Project Area (Survey Area)



ID: M3358 (EPBC 2022/09295) Page: 18
 Date: 9/04/2025
 Spatial Reference: GDA 1994 MGA Zone 55
 Author: R Webb
 Tasmanian Irrigation

Credits: Source: Esri, Maxar, Earthstar Geographics, and the GIS User Community. Sources: Esri, TomTom, Garmin, FAO, NOAA, USGS, © OpenStreetMap contributors, and the GIS User Community. TASMAP © State of Tasmania, the LIST © State of Tasmania
 DISCLAIMER: This map is for informational purposes only. It should not be relied upon to establish with certainty the location of any of the features represented on it, either absolutely or in relation to other features. This map is not suitable for site specific decision making.





55G 527207 5364952

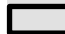

55G 535407 5364952

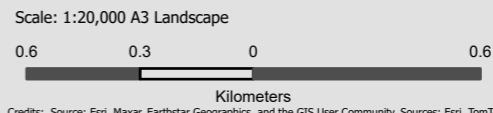
55G 527207 5359812

55G 535407 5359812

NMIS Project Area and Construction Corridor

CONFIDENTIAL - FOR INTERNAL DISTRIBUTION ONLY

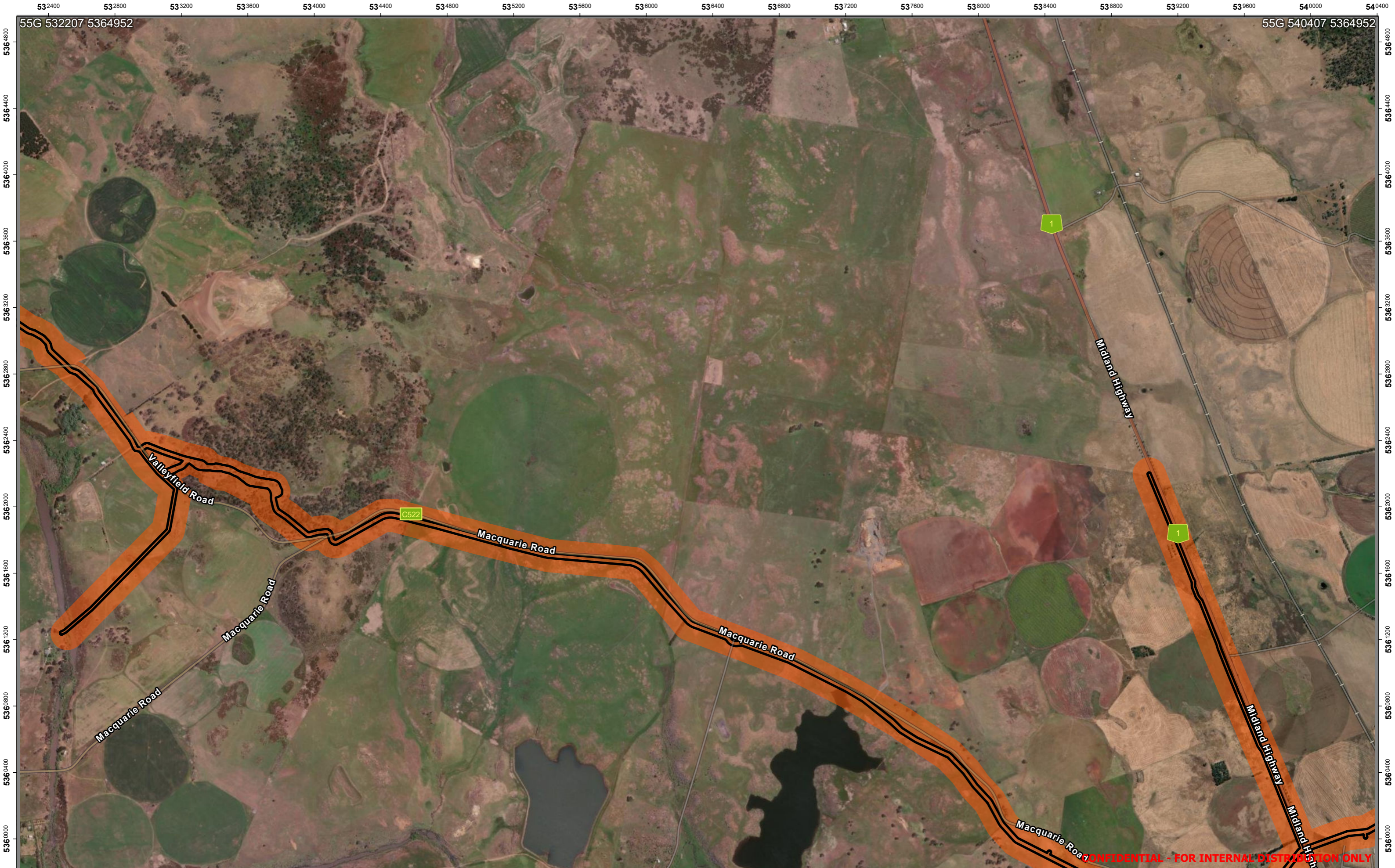
- Legend**
-  Construction Corridor (Impact Area)
 -  Construction Project Area (Survey Area)



ID: M3358 (EPBC 2022/09295) Page: 19
 Date: 9/04/2025
 Spatial Reference: GDA 1994 MGA Zone 55
 Author: R Webb
 Tasmanian Irrigation

Credits: Source: Esri, Maxar, Earthstar Geographics, and the GIS User Community. Sources: Esri, TomTom, Garmin, FAO, NOAA, USGS, © OpenStreetMap contributors, and the GIS User Community. TASMAP © State of Tasmania, the LIST © State of Tasmania
 DISCLAIMER: This map is for informational purposes only. It should not be relied upon to establish with certainty the location of any of the features represented on it, either absolutely or in relation to other features. This map is not suitable for site specific decision making.





55G 532207 5364952

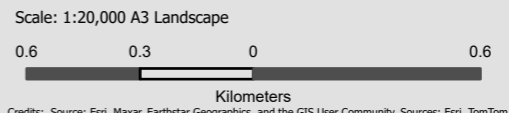
55G 540407 5364952

55G 532207 5359812

55G 540407 5359812

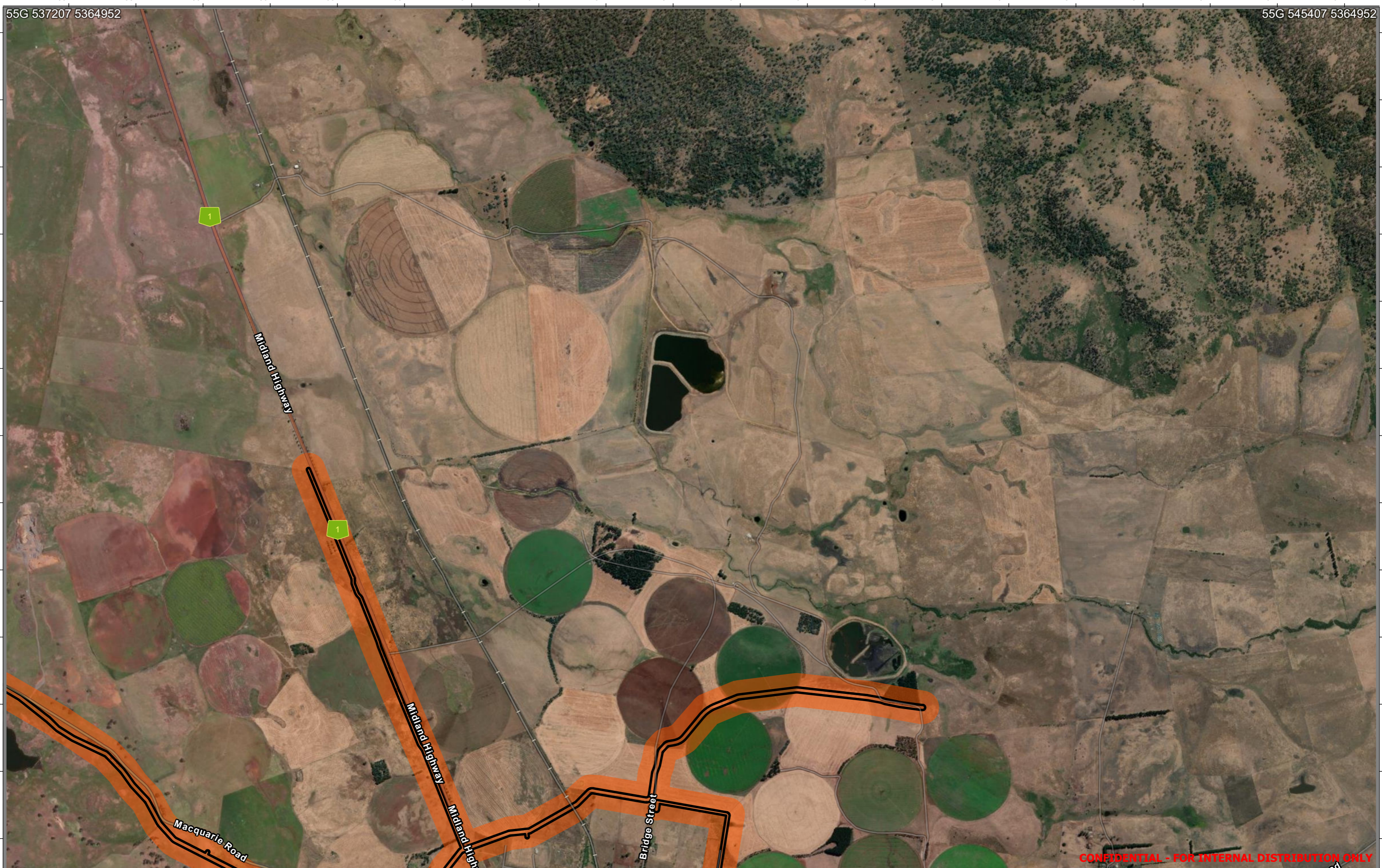
NMIS Project Area and Construction Corridor

- Legend**
- Construction Corridor (Impact Area)
 - Construction Project Area (Survey Area)



ID: M3358 (EPBC 2022/09295) Page: 20
 Date: 9/04/2025
 Spatial Reference: GDA 1994 MGA Zone 55
 Author: R Webb
 Tasmanian Irrigation

Credits: Source: Esri, Maxar, Earthstar Geographics, and the GIS User Community. Sources: Esri, TomTom, Garmin, FAO, NOAA, USGS, © OpenStreetMap contributors, and the GIS User Community. TASMAP © State of Tasmania, the LIST © State of Tasmania
 DISCLAIMER: This map is for informational purposes only. It should not be relied upon to establish with certainty the location of any of the features represented on it, either absolutely or in relation to other features. This map is not suitable for site specific decision making.

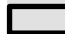



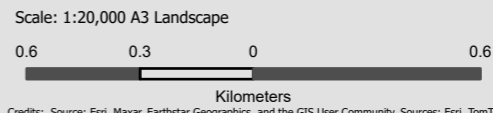
55G 537207 5364952
5364800
5364400
5364000
5363600
5363200
5362800
5362400
5362000
5361600
5361200
5360800
5360400
5360000
55G 537207 5359812

55G 545407 5364952
5364800
5364400
5364000
5363600
5363200
5362800
5362400
5362000
5361600
5361200
5360800
5360400
5360000
55G 545407 5359812

NMIS Project Area and Construction Corridor

CONFIDENTIAL - FOR INTERNAL DISTRIBUTION ONLY

- Legend**
-  Construction Corridor (Impact Area)
 -  Construction Project Area (Survey Area)



ID: M3358 (EPBC 2022/09295) Page: 21
Date: 9/04/2025
Spatial Reference: GDA 1994 MGA Zone 55
Author: R Webb
Tasmanian Irrigation

Credits: Source: Esri, Maxar, Earthstar Geographics, and the GIS User Community, Sources: Esri, TomTom, Garmin, FAO, NOAA, USGS, © OpenStreetMap contributors, and the GIS User Community, TASMAP © State of Tasmania, the LIST © State of Tasmania
DISCLAIMER: This map is for informational purposes only. It should not be relied upon to establish with certainty the location of any of the features represented on it, either absolutely or in relation to other features. This map is not suitable for site specific decision making.





55G 532207 5359952

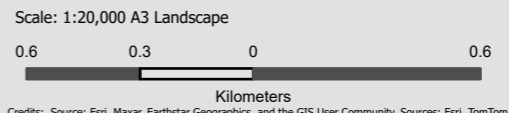
55G 540407 5359952

55G 532207 5354812

55G 540407 5354812

NMIS Project Area and Construction Corridor

- Legend**
- Construction Corridor (Impact Area)
 - Construction Project Area (Survey Area)



ID: M3358 (EPBC 2022/09295) Page: 22
 Date: 9/04/2025
 Spatial Reference: GDA 1994 MGA Zone 55
 Author: R Webb
 Tasmanian Irrigation

Credits: Source: Esri, Maxar, Earthstar Geographics, and the GIS User Community. Sources: Esri, TomTom, Garmin, FAO, NOAA, USGS, © OpenStreetMap contributors, and the GIS User Community, TASMAP © State of Tasmania, the LIST © State of Tasmania
 DISCLAIMER: This map is for informational purposes only. It should not be relied upon to establish with certainty the location of any of the features represented on it, either absolutely or in relation to other features. This map is not suitable for site specific decision making.



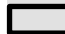

CONFIDENTIAL - FOR INTERNAL DISTRIBUTION ONLY

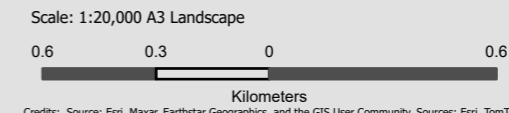


55G 537207 5359952
5359600
5359200
5358800
5358400
5358000
5357600
5357200
5356800
5356400
5356000
5355600
5355200
55G 537207 5354812

55G 545407 5359952
5359600
5359200
5358800
5358400
5358000
5357600
5357200
5356800
5356400
5356000
5355600
5355200
55G 545407 5354812


NMIS Project Area and Construction Corridor

- Legend**
-  Construction Corridor (Impact Area)
 -  Construction Project Area (Survey Area)



ID: M3358 (EPBC 2022/09295) Page: 23
Date: 9/04/2025
Spatial Reference: GDA 1994 MGA Zone 55
Author: R Webb
Tasmanian Irrigation

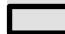

Credits: Source: Esri, Maxar, Earthstar Geographics, and the GIS User Community. Sources: Esri, TomTom, Garmin, FAO, NOAA, USGS, © OpenStreetMap contributors, and the GIS User Community. TASMAP © State of Tasmania, the LIST © State of Tasmania
DISCLAIMER: This map is for informational purposes only. It should not be relied upon to establish with certainty the location of any of the features represented on it, either absolutely or in relation to other features. This map is not suitable for site specific decision making.

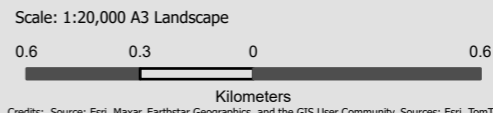


CONFIDENTIAL - FOR INTERNAL DISTRIBUTION ONLY



55G 532207 5349812 **NMIS Project Area and Construction Corridor** 55G 540407 5349812

- Legend
-  Construction Corridor (Impact Area)
 -  Construction Project Area (Survey Area)



ID: M3358 (EPBC 2022/09295) Page: 24
 Date: 9/04/2025
 Spatial Reference: GDA 1994 MGA Zone 55
 Author: R Webb
 Tasmanian Irrigation

Credits: Source: Esri, Maxar, Earthstar Geographics, and the GIS User Community. Sources: Esri, TomTom, Garmin, FAO, NOAA, USGS, © OpenStreetMap contributors, and the GIS User Community, TASMAR © State of Tasmania, the LIST © State of Tasmania
 DISCLAIMER: This map is for informational purposes only. It should not be relied upon to establish with certainty the location of any of the features represented on it, either absolutely or in relation to other features. This map is not suitable for site specific decision making.



CONFIDENTIAL - FOR INTERNAL DISTRIBUTION ONLY



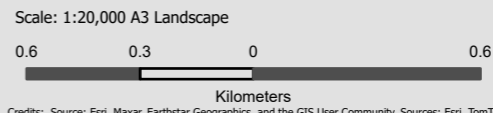
55G 532207 5349952 55G 540407 5349952

55G 532207 5344812 55G 540407 5344812

NMIS Project Area and Construction Corridor

CONFIDENTIAL - FOR INTERNAL DISTRIBUTION ONLY

- Legend**
- Construction Corridor (Impact Area)
 - Construction Project Area (Survey Area)



ID: M3358 (EPBC 2022/09295) Page: 25
 Date: 9/04/2025
 Spatial Reference: GDA 1994 MGA Zone 55
 Author: R Webb
 Tasmanian Irrigation

Credits: Source: Esri, Maxar, Earthstar Geographics, and the GIS User Community, Sources: Esri, TomTom, Garmin, FAO, NOAA, USGS, © OpenStreetMap contributors, and the GIS User Community, TASMAP © State of Tasmania, the LIST © State of Tasmania
 DISCLAIMER: This map is for informational purposes only. It should not be relied upon to establish with certainty the location of any of the features represented on it, either absolutely or in relation to other features. This map is not suitable for site specific decision making.





55G 537207 5349952

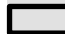

55G 545407 5349952

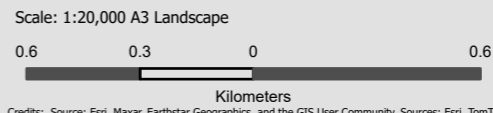
55G 537207 5344812

55G 545407 5344812

NMIS Project Area and Construction Corridor

CONFIDENTIAL - FOR INTERNAL DISTRIBUTION ONLY

- Legend**
-  Construction Corridor (Impact Area)
 -  Construction Project Area (Survey Area)



ID: M3358 (EPBC 2022/09295) Page: 26
 Date: 9/04/2025
 Spatial Reference: GDA 1994 MGA Zone 55
 Author: R Webb
 Tasmanian Irrigation

Credits: Source: Esri, Maxar, Earthstar Geographics, and the GIS User Community. Sources: Esri, TomTom, Garmin, FAO, NOAA, USGS, © OpenStreetMap contributors, and the GIS User Community. TASMAP © State of Tasmania, the LIST © State of Tasmania
 DISCLAIMER: This map is for informational purposes only. It should not be relied upon to establish with certainty the location of any of the features represented on it, either absolutely or in relation to other features. This map is not suitable for site specific decision making.





55G 537207 5344952

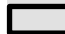

55G 545407 5344952

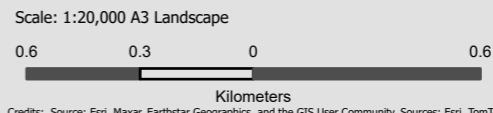
55G 537207 5339812

55G 545407 5339812

NMIS Project Area and Construction Corridor

CONFIDENTIAL FOR INTERNAL DISTRIBUTION ONLY

- Legend**
-  Construction Corridor (Impact Area)
 -  Construction Project Area (Survey Area)



ID: M3358 (EPBC 2022/09295) Page: 27
 Date: 9/04/2025
 Spatial Reference: GDA 1994 MGA Zone 55
 Author: R Webb
 Tasmanian Irrigation

Credits: Source: Esri, Maxar, Earthstar Geographics, and the GIS User Community. Sources: Esri, TomTom, Garmin, FAO, NOAA, USGS, © OpenStreetMap contributors, and the GIS User Community. TASMAP © State of Tasmania, the LIST © State of Tasmania
 DISCLAIMER: This map is for informational purposes only. It should not be relied upon to establish with certainty the location of any of the features represented on it, either absolutely or in relation to other features. This map is not suitable for site specific decision making.

